

# LUVION®

ЭЛЕКТРИЧЕСКАЯ ЗУБНАЯ ЩЕТКА SONIC BABY



ИНСТРУКЦИЯ ПО ЭКСПЛУАТАЦИИ



## КОМПЛЕКТАЦИЯ

- Электрическая зубная щетка
- Чистящая насадка для детей от 3 до 18 месяцев (уже установлена на устройство)
- Чистящая насадка для детей от 18 до 36 месяцев
- Батарейка AAA (R03) (уже установлена в устройство)
- Инструкция

## КРАТКОЕ ОПИСАНИЕ

### Электрическая зубная щетка sonic baby (Рис. 1)

1. Щетина
2. Сменная чистящая насадка
3. Подсветка
4. Кнопка включения
5. Батарейка AAA
6. Батарейный отсек
7. Крышка батарейного отсека
8. Чтобы снять крышку батарейного отсека поверните ее против часовой стрелки. Замените батарею AAA.
9. Чтобы снять чистящую насадку поверните корпус устройства против часовой стрелки и потяните насадку вверх.

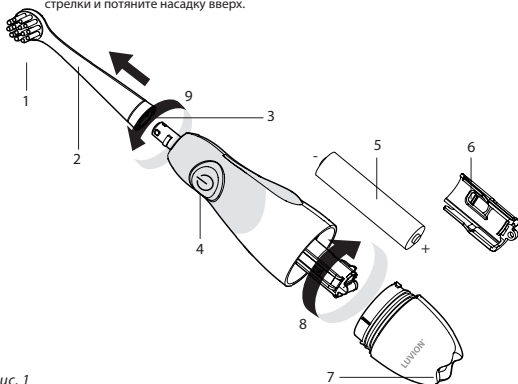
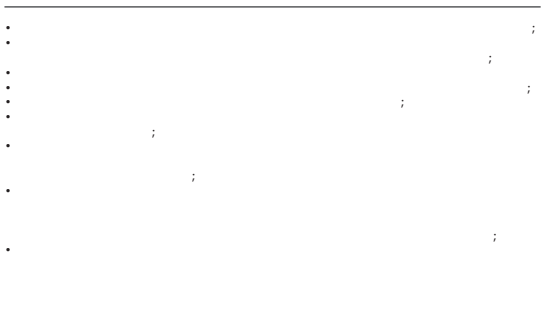


Рис. 1

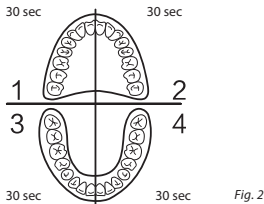
**ВВЕДЕНИЕ**

---

**В**

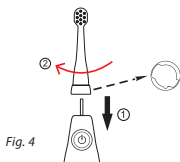
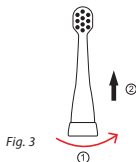
## HOW TO USE

1. First use: Remove the plastic insulator from the battery by holding the toothbrush upside down, thereafter turn the cap (7) counter-clockwise to open and peel off the plastic insulator from the battery compartment. Place battery cap back in place by turning clockwise;
2. Wet the brush and apply appropriate amount of toothpaste;
3. Press on the power button (4). You will see the toothbrush light up;
4. Divide the teeth into up, down, left and right sections. See picture below (fig. 2).  
This toothbrush is equipped with a 2-minute-total timer and 30-second pulse reminders that signals when it's time to move on to the next quadrant of the mouth;



5. Place toothbrush against teeth at a slight angle towards the gum line;
6. Press the power button (4) again to turn on the toothbrush. Gently move the brush head across the teeth and gums with small up and down movements;
7. Move to the next section when the brush signals (pulses), (every 30 seconds) until all four sections of the mouth have been brushed;
8. The toothbrush will power off automatically after 2 minutes. If you wish to proceed, simply press the power button (4) again to continue.

## CHANGING THE BRUSH HEAD



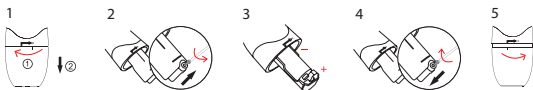
**Step 1:** Detach the brush head counter-clockwise (fig. 3) and pull upward.

**Step 2:** To attach: align the new brush head and turn it clockwise (fig. 4).

**Please note:** The notch on the neck should align with the inner notches of the brush head in order to lock in place.

## RePIACING THE BATTeRY

---



**Step 1:** Hold the toothbrush upside down, turn the battery cap counter-clockwise to open;

**Step 2:** Unscrew the battery compartment with a small philips screwdriver;

**Step 3:** Insert a new AAA battery, pay attention to plus and minus poles;

**Step 4:** Place the battery cover door and tighten the screw. Do not over-tighten

**Step 5:** Align line marker on battery cap with the line marker on brush handle. Place the battery cap back in place by turning clockwise.

## SPeCIFICATIONS

---

Material:	DuPont Nylon / ABS / TPE
Power supply:	1 x AAA (R03) battery (included)
Waterproof:	IPX7
Frequency:	16.000 movements per minute

LUVION PREMIUM BABYPRODUCTS  
Kleveringweg 7  
2616 LZ Delft  
The Netherlands

[www.luvion.com](http://www.luvion.com)